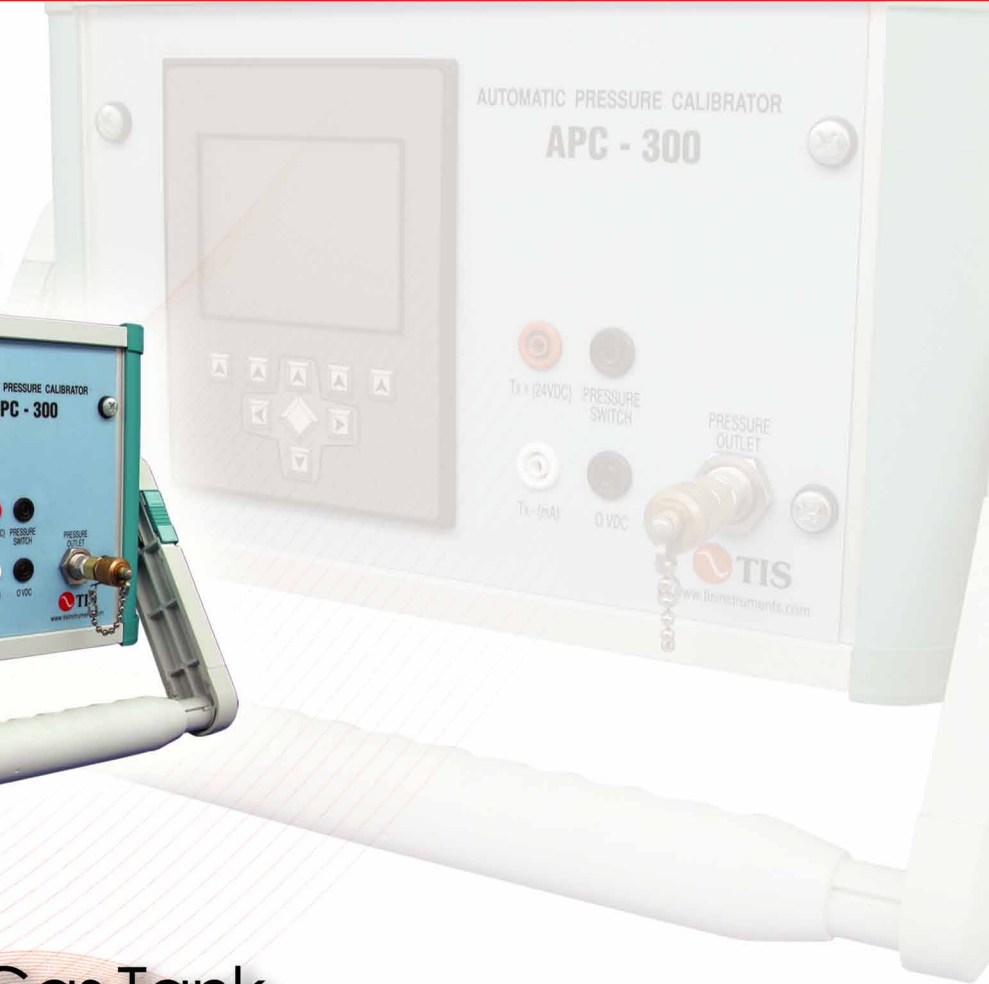


TIS Automatic Pneumatic Pressure Calibrator/Controller



No External Gas Tank

Control Stability within 15secs

Custom Ranges (-atm to 300psi)

Accuracy up to 0.01%FS

Calibration
made easy

Specifications of APC-300

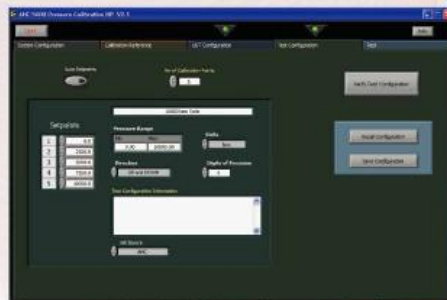
Internal Reference Range	-atm to 300 psig/psia or any range below
Accuracy	+/-0.025%FS, optional 0.01%FS
Temperature Compensation	0 to +50 C to rated accuracy
Selectable Engineering Units	PSI, MPa, kPa, Pa, Bar, mBar, kg/cm ² , inH ₂ O@20C, mmH ₂ O@20C
Display	5 or 6 digits depending on accuracy selected
Control Stability	0.002%FS @ less than 15 seconds
mA Input Accuracy	0.025%FS with 24Vdc Loop Power
Media Compatibility	built-in pump, self generate
Communication Interface	RS-232
Pressure Connection	1/4", 3/8", 1/2" NPT Female
Warm Up Time	10 minutes
Dimension	280 x 180 x 540 mm (>150psig) 280 x 180 x 420 mm (<150psig)
Weight	14kg
Power	230 or 115 Vac

TIS Cal - ware

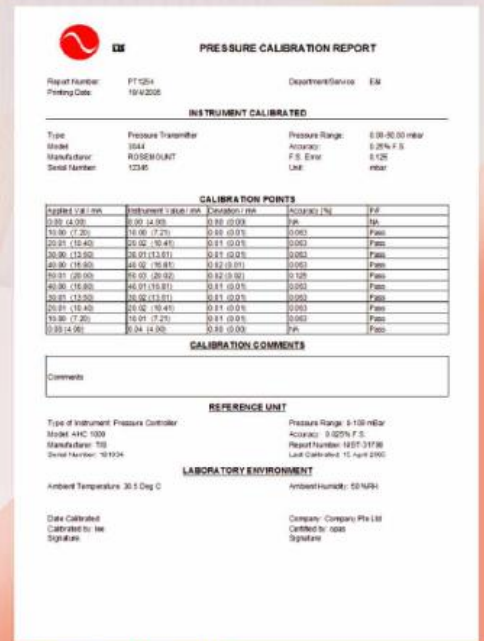
- Windows Based Calibration Software
- Generate/Save Calibration Report in Excel format



(Screenshot of Calibration Process)



(Screenshot of Configuration)



(Sample Report)



APC-300

Distributed by:

Ordering Information

APC-300 (Range)
e.g. APC-300 (-atm to 150psig)